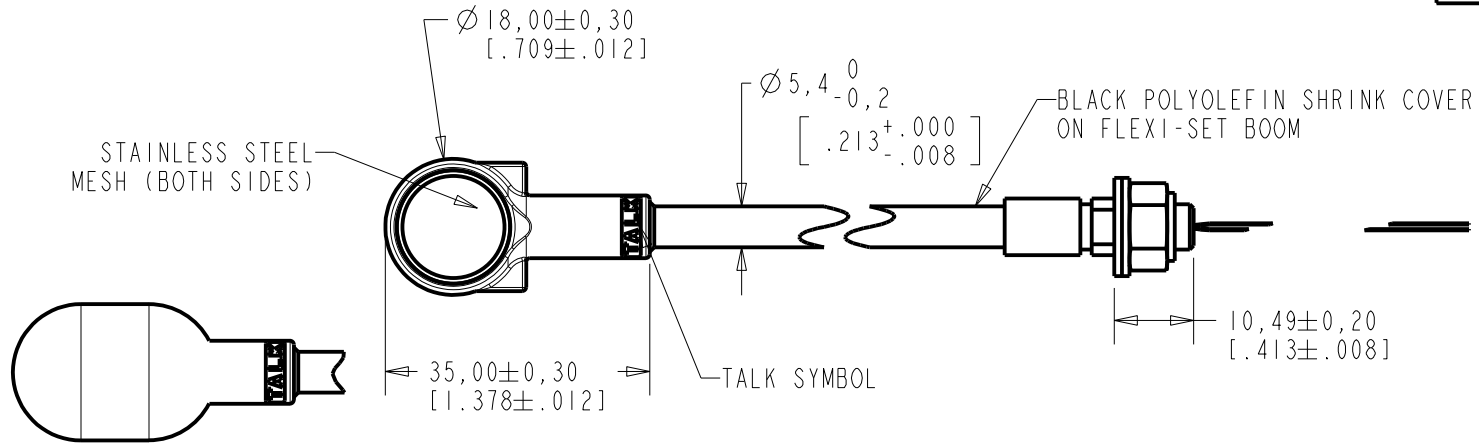
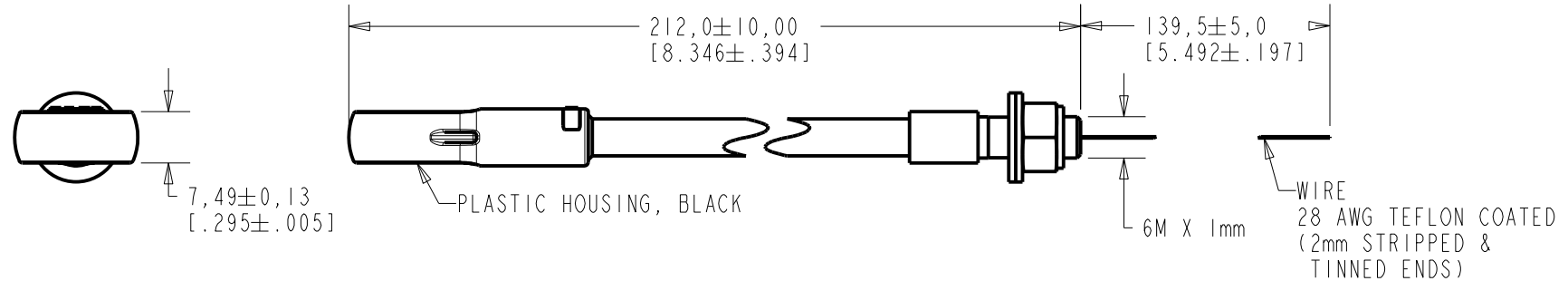


FB-EI-30426-000
SHT 1.1



RED CONTROLLED

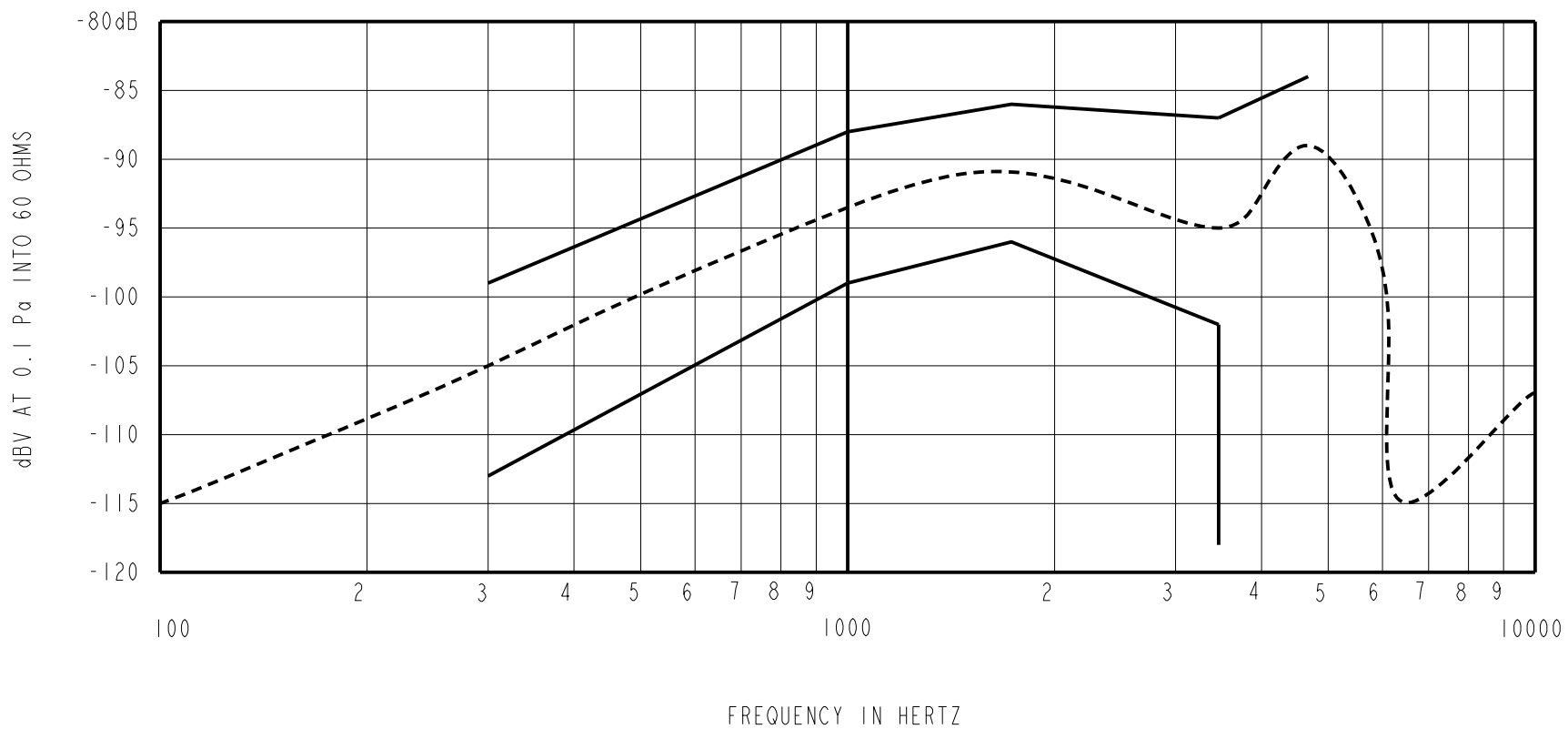


WIRE COLOR		WEIGHT GRAMS
+ve	OUTPUT	
RED	-	BLACK
		t.b.d.

DIMENSIONS IN MILLIMETERS [INCHES]

KNOWLES ELECTRONICS
ITASCA, ILLINOIS U.S.A.

Revision	C.O. #	Implementation Date	RELEASE LEVEL	REVISION
			Active	D
D	C40101206	3-5-13		
SCALE: 1:1			DR. BY	DATE
DO NOT SCALE DRAWING			TT	4-14-08
TITLE: BOOM MICROPHONE FB-EI-30426-000			GJP	4-25-08
OUTLINE DRAWING			APP. BY	DATE
			GJP	4-25-08
			SHT 1.1	

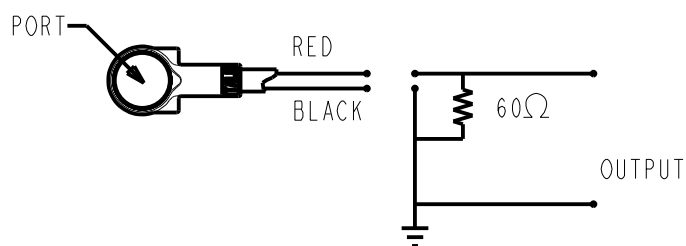
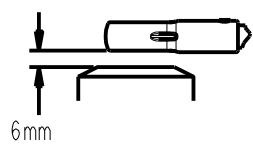


NOTES:

1. SENSITIVITY VALUES INDICATED ON THIS SPECIFICATION ARE VALID AT 50% HUMIDITY.
2.

FREQUENCY	SENSITIVITY		
	MIN.	NOM.	MAX.
300	-113	-105	-99
1000	-99	-93.5	-88
1800	-96	-91	-86
3500	-102	-95	-87
4000	---	-92.5	---
4700	---	-89	-84
3. TEST CONDITIONS:
HEAD OF BOOM EXPOSED TO 74 dB SPL SWEPT SOUND FIELD AT 6mm FROM VOICE APERTURE.
ARTIFICIAL VOICE:
B & k 4227 MOUTH SIMULATOR.
4. FOR MICROPHONE CAPSULE SPEC. SEE DRAWING BJ-28486-000 SHEET 2.1.
5. PASS WATER PROOF TEST 1m.5 MINUTES.

RED CONTROLLED



LEAD IDENTIFICATION & TEST CIRCUIT

TT 12-10-07

Revision	C.O. #	Implementation Date	RELEASE LEVEL	REVISION
			Active	D
D	C40101206	3-5-13		

KNOWLES ELECTRONICS
ITASCA, ILLINOIS U.S.A.

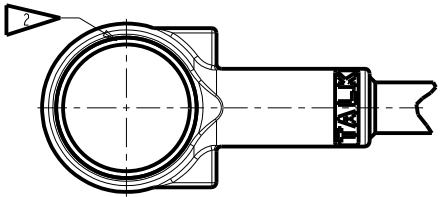
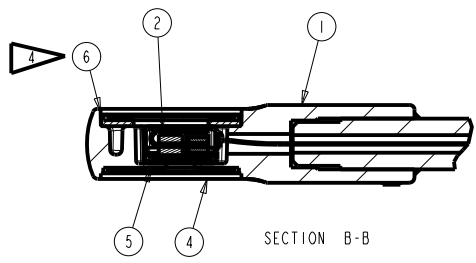
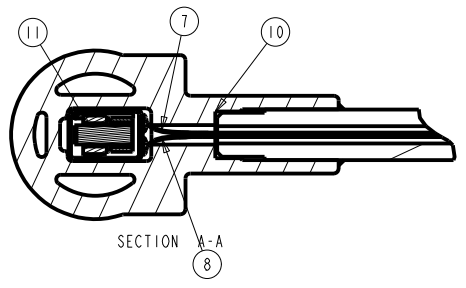
WHEN TEST LIMITS ARE USED TO ESTABLISH INCOMING INSPECTION ACCEPTANCE/REJECTION CRITERIA, CORRELATION OF TEST EQUIPMENT WITH KNOWLES IS ALSO REQUIRED FOR ELIMINATION OF EQUIPMENT AND TEST METHOD VARIATION

TITLE: **BOOM MICROPHONE FB-EI-30426-000**
PERFORMANCE SPECIFICATION **SHT 2.1**

DR. BY	DATE
TT	4-14-08
CK. BY	DATE
GJP	4-25-08
APP. BY	DATE
GJP	4-25-08

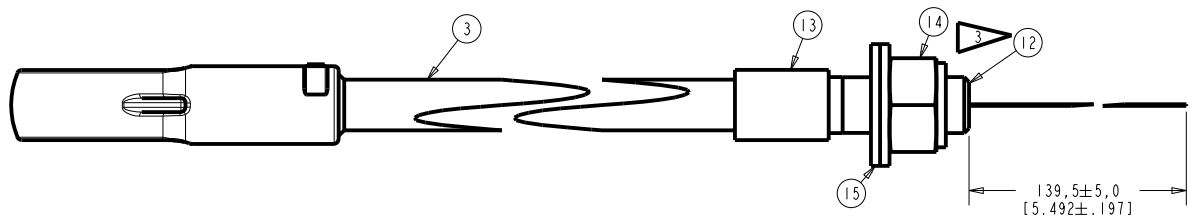
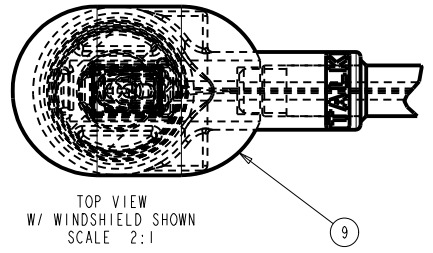
PROPRIETARY NOTE: THIS DOCUMENT CONTAINS INFORMATION WHICH IS THE PROPRIETARY PROPERTY OF KNOWLES ELECTRONICS, LLC. OR ITS AFFILIATED ENTITIES. IT IS ISSUED TO THE ADDRESSEE FOR HIS OR HER USE ONLY AND IS NOT TO BE REPRODUCED OR TRANSMITTED IN ANY FORM OR BY ANY MEANS, ELECTRONIC OR MECHANICAL, INCLUDING PHOTOCOPYING, RECORDING, OR BY ANY INFORMATION STORAGE AND RETRIEVAL SYSTEM, WITHOUT THE WRITTEN PERMISSION OF, AND MUST BE RETURNED UPON REQUEST BY, KNOWLES ELECTRONICS, LLC.

FB-EI-30426-000



RED CONTROLLED

- NOTES:
1. ITEM NUMBERS (SHOWN THUS **b**) ON DRAWING CORRESPOND WITH ITEM NUMBERS ON BILL OF MATERIAL.
 2. ATTACH ITEM **4** TO ITEM **1** IN 4 PLACES MINIMUM ON EACH SIDE USING CEMENT (ITEM **10**).
 3. SEAL BOOM END WITH ITEM **12**. BUILD UP TO BE 2mm MAX.
 4. WATERPROOF SEAL BETWEEN ITEMS **1** & **6** WITH CEMENT.
 5. ITEM **10** (FB-044) MUST USE VERSION F OR ABOVE.



DIMENSIONS IN MILLIMETERS [INCHES]

MATERIAL		SEE BILL OF MATERIALS	FINISH	RELEASE LEVEL	REVISION
REF. 10-1747	A I.c.o. C10107360		KNOWLES ELECTRONICS ITASCA, ILLINOIS U.S.A.	Active SCALE: 2:1	D
	B I.c.o. C10107747				
	REMANE IN PROZE FROM FB-30426-000 TO FB-EI-30426-000 11.8.11-08				
	C I.c.o. C40100594				
	REVISE CEMENT PN 2-28-11		UNLESS OTHERWISE SPECIFIED, DIMENSIONS ARE IN INCHES	DO NOT SCALE DRAWING	
	D I.c.o. C40101206			DR. BY DATE TT 4-14-08	CH. BY DATE GJP 4-25-08
	UPDATE THE REVISION 00.3-4-13		THIRD ANGLE PROJECTION	BOOM MICROPHONE ASSEMBLY	
				FB-EI-30426-000 SHEET 3.1	

FB-EI-30426-000			KNOWLES ELECTRONICS		FB-EI-30426-000	
Sheet 4.1			ITASCA, ILLINOIS U.S.A.		Sheet 4.1	
Dr.	By	Date	Subject:	BOOM MICROPHONE ASSEMBLY	D	Release Level Active
Ch.	TT	4-14-08				
App.	GJP	4-25-08				
	GJP	4-25-08				

COL. 1	2	3	4	Item No.	Line No.
Part or Dwg. no.	Tot. Req.	Nomenclature:	Applicable Specs or Remarks		
FB-044	1	HOUSING		1	1
BJ-28486-000	1	MICROPHONE ASSEMBLY		2	2
FB-189-172	1	FLEXIBLE BOOM 5.4 mm		3	3
FB-223	2	SCREEN DISC		4	4
FB-234	2	MEMBRANE		5	5
FB-045	1	COVER		6	6
FB-070-011	A/R	WIRE BLACK TEFLON		7	7
FB-070-008	A/R	WIRE RED TEFLON		8	8
FB-042	1	WINDSHIELD		9	9
13-092-080102	A/R	CEMENT		10	10
13-092-120103	A/R	CEMENT		11	11
13-591	1	SILICONE SEALANT		12	12
FB-201	1	BULKHEAD CONNECTOR		13	13
FB-051	1	NUT		14	14
FB-052	2	WASHER		15	15

RED CONTROLLED

REVISION	A	c.o. C10107360
	B	c.o. C10107747
	RENAME IN PROFE FROM FB-30426-000 TO FB-EI-30426-000 TT 8-11-08	
C	c.o. C40100594	
	REVISE CEMENT PN CW 2-28-11	
D	c.o. C40101206	
	FB-234 WAS FB-038 00 3-4-13	

FB-EI-30426-000
Sheet **4.1**

PROPRIETARY NOTE: THIS DOCUMENT CONTAINS INFORMATION WHICH IS THE PROPRIETARY PROPERTY OF KNOWLES ELECTRONICS, LLC. OR ITS AFFILIATED ENTITIES. IT IS ISSUED IN STRICT CONFIDENCE AND SHALL NOT BE REPRODUCED, COPIED, USED, OR DISCLOSED TO ANY THIRD PARTY PARTIALLY OR WHOLLY IN ANY MANNER WITHOUT PRIOR WRITTEN PERMISSION OF, AND MUST BE RETURNED UPON REQUEST BY, KNOWLES ELECTRONICS, LLC.

TEL: 800-PART-00-PM REF: 0