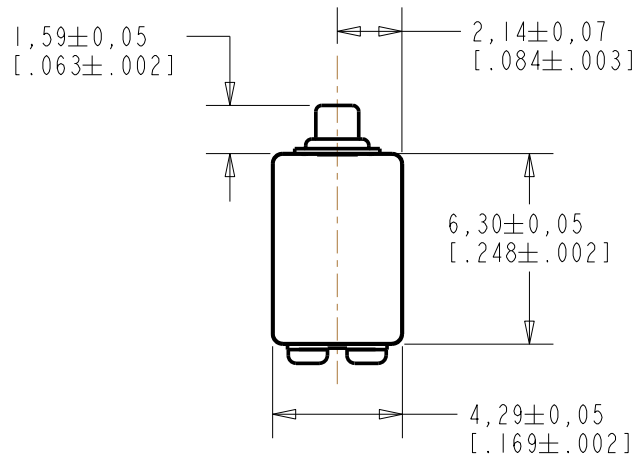


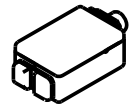
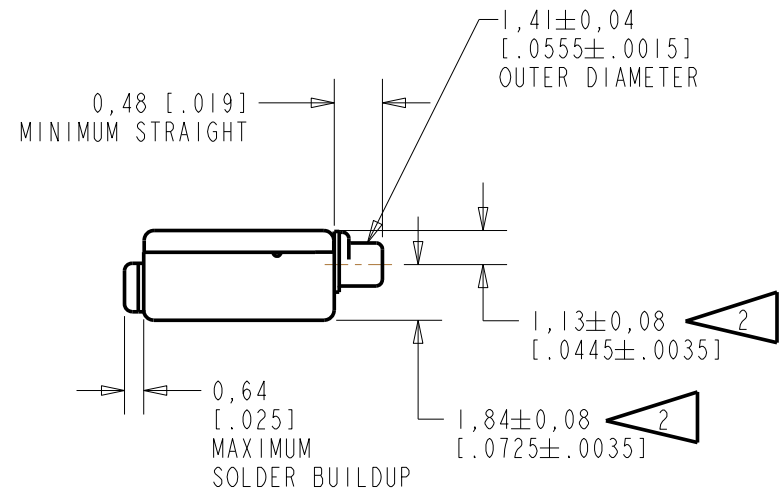
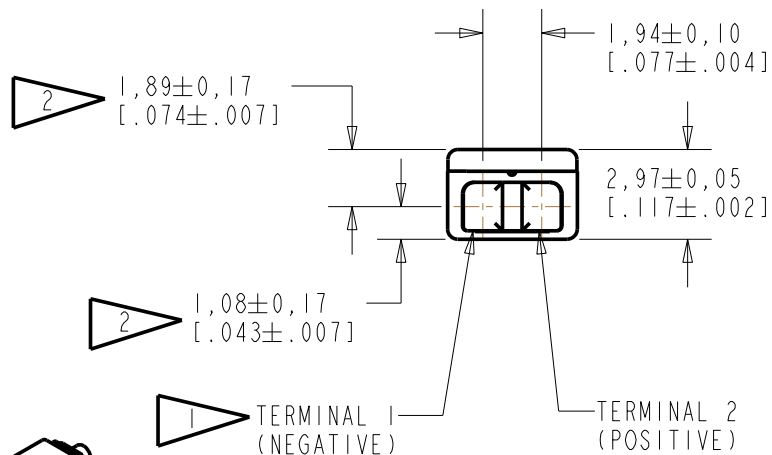
ED-23993-000

SHT 1.1



NOTE:

- 1 ▲ A POSITIVE GOING VOLTAGE AT TERMINAL 2, RELATIVE TO TERMINAL 1, CAUSES A DECREASE IN PRESSURE AT THE SOUND OUTLET.
- 2 ▲ LOCATED FROM TWO SURFACES FOR CUSTOMER CONVENIENCE. ONLY APPLICABLE FROM ONE SURFACE, NOT TO BE USED TOGETHER. HORIZONTAL LOCATION FOR TERMINAL CENTERED TO ±0,17 [.007].



SCALE 2:1

NOMINAL WEIGHT
.31 GRAM

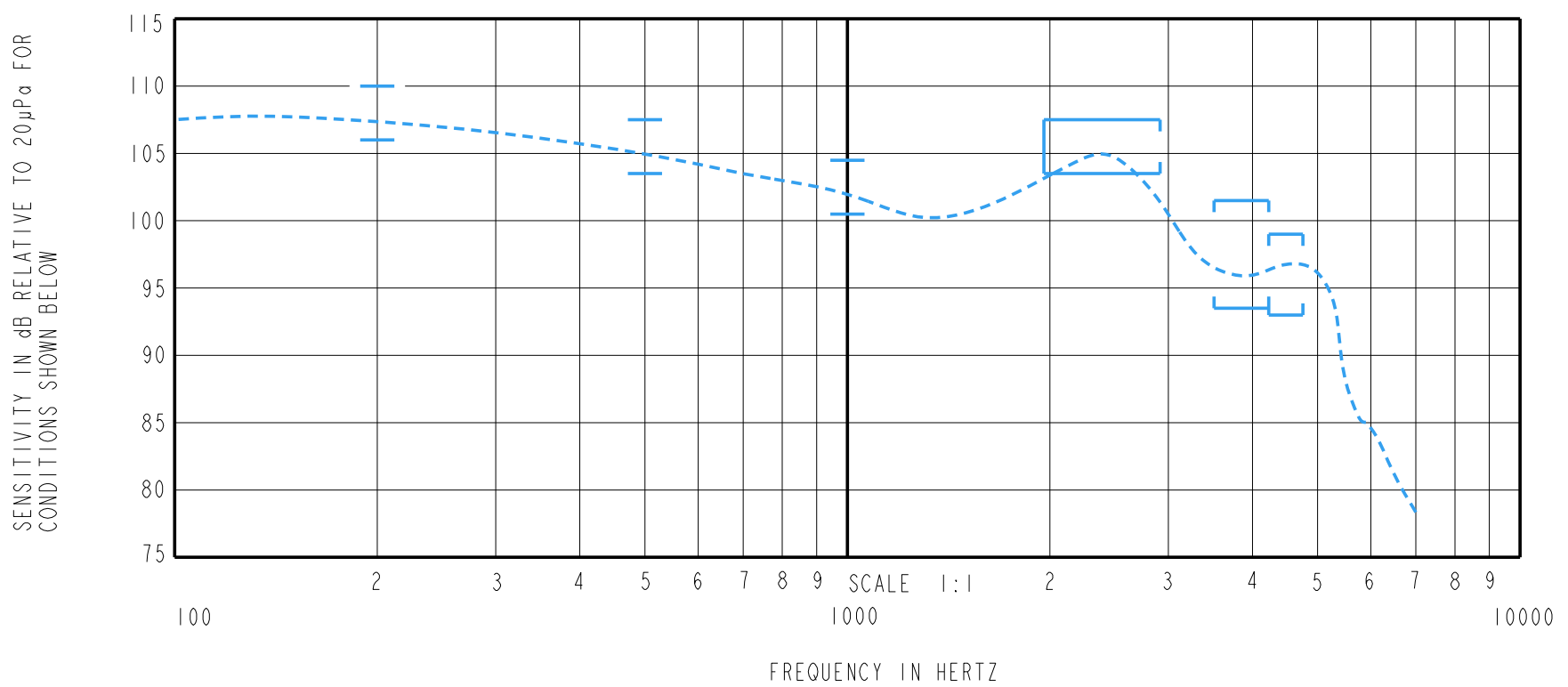
DIMENSIONS IN MILLIMETERS [INCHES]

Revision	C.O. #	Implementation Date	RELEASE LEVEL	REVISION
B	C10107990	8-20-08	Active	B
A	C10103839	1-24-06		

SCALE: 2:1		DR. BY	DATE
DO NOT SCALE DRAWING		CRG	1-24-06
TITLE: RECEIVER		CK. BY	DATE
ED-23993-000		GJP	1-25-06
OUTLINE DRAWING		APP. BY	DATE
SHT 1.1		GJP	1-25-06

KNOWLES ELECTRONICS
ITASCA, ILLINOIS U.S.A.

CONSTANT VOLTAGE DRIVE CONDITIONS



ACOUSTICAL

SENSITIVITY
DEVICE WILL PRODUCE THE SPL LISTED BELOW UNDER TEST CONDITIONS DESCRIBED IN TABLE 3.
NOMINAL SENSITIVITY AT 1kHz IS dB RELATIVE TO 20µPa. ALL OTHER VALUES
IN dB RELATIVE TO THE SENSITIVITY AT 1kHz.

FREQUENCY (Hz)	MINIMUM	NOMINAL	MAXIMUM
200	+3.5	+5.5	+7.5
500	+1.0	+3.0	+5.0
1000	-2.0	102.5	+2.0
1900-2900	+1.0	+3.0	+5.0
3600-4200	-9.0	---	-1
4250-4750	-9.5	-6.5	-3.5

PORT LOCATION: 12C

TABLE 1

TOTAL HARMONIC DISTORTION
DEVICE WILL NOT EXCEED TOTAL HARMONIC DISTORTION LEVELS LISTED BELOW.

FREQUENCY (Hz)	AC DRIVE (V rms)	DC BIAS (mA)	LIMIT (%)
500	0.943	0	10
780	0.335	0	5
1175	0.335	0	5

TABLE 2

TEST CONDITIONS

NOMINAL SOURCE VOLTAGE	0.335 V rms, 0mA DC BIAS
SOURCE IMPEDANCE	<1 Ohm
TUBING	10mm [.394"] LONG, 1mm [.039"] I.D.
COUPLER CAVITY	2 CM ³ , SIMULATED ANSI S3.7 TYPE HA-3 (IEC 126)

TABLE 3

ELECTRICAL

DC RESISTANCE	119 OHMS ± 10%
IMPEDANCE @ 500 Hz	268 OHMS ± 15%
IMPEDANCE @ 1 kHz	490 OHMS ± 15%

TABLE 4

ISOLATION: CASE WILL BE ELECTRICALLY ISOLATED FROM THE COIL CIRCUIT.

Revision	C.O. #	Implementation Date	RELEASE LEVEL	REVISION
B	C10107990	8-20-08	Active	B
A	C10103839	1-24-06		
WHEN TEST LIMITS ARE USED TO ESTABLISH INCOMING INSPECTION ACCEPTANCE/REJECTION CRITERIA, CORRELATION OF TEST EQUIPMENT WITH KNOWLES IS ALSO REQUIRED FOR ELIMINATION OF EQUIPMENT AND TEST METHOD VARIATION				
TITLE: RECEIVER			ED-23993-000	DR. BY DATE
PERFORMANCE SPECIFICATION			SHT 2.1	CRG 1-24-06
				CK. BY DATE
				GJP 1-25-06
				APP. BY DATE
				GJP 1-25-06

KNOWLES ELECTRONICS
ITASCA, ILLINOIS U.S.A.