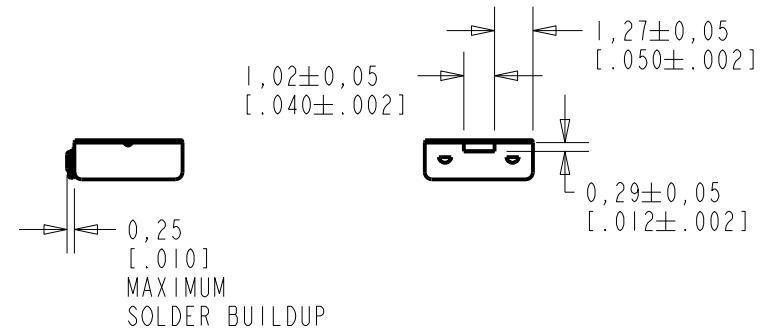
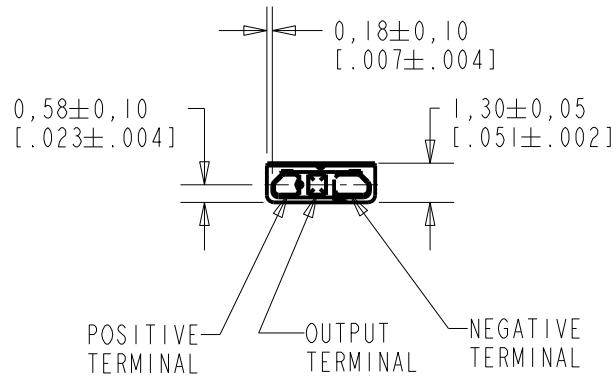
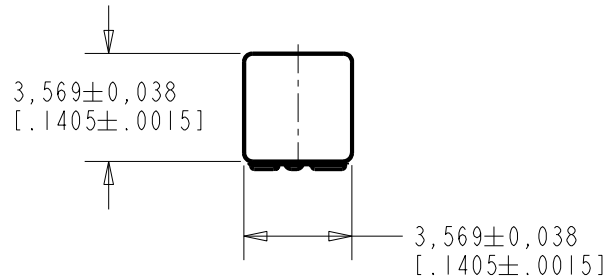


T0-30023-000
SHT 1.1

NOTES:

1. INCREASED PRESSURE AT THE SOUND INLET CAUSES A POSITIVE GOING VOLTAGE TO APPEAR AT THE OUTPUT TERMINAL, RELATIVE TO THE NEGATIVE TERMINAL.



NOMINAL WEIGHT
.063 GRAMS

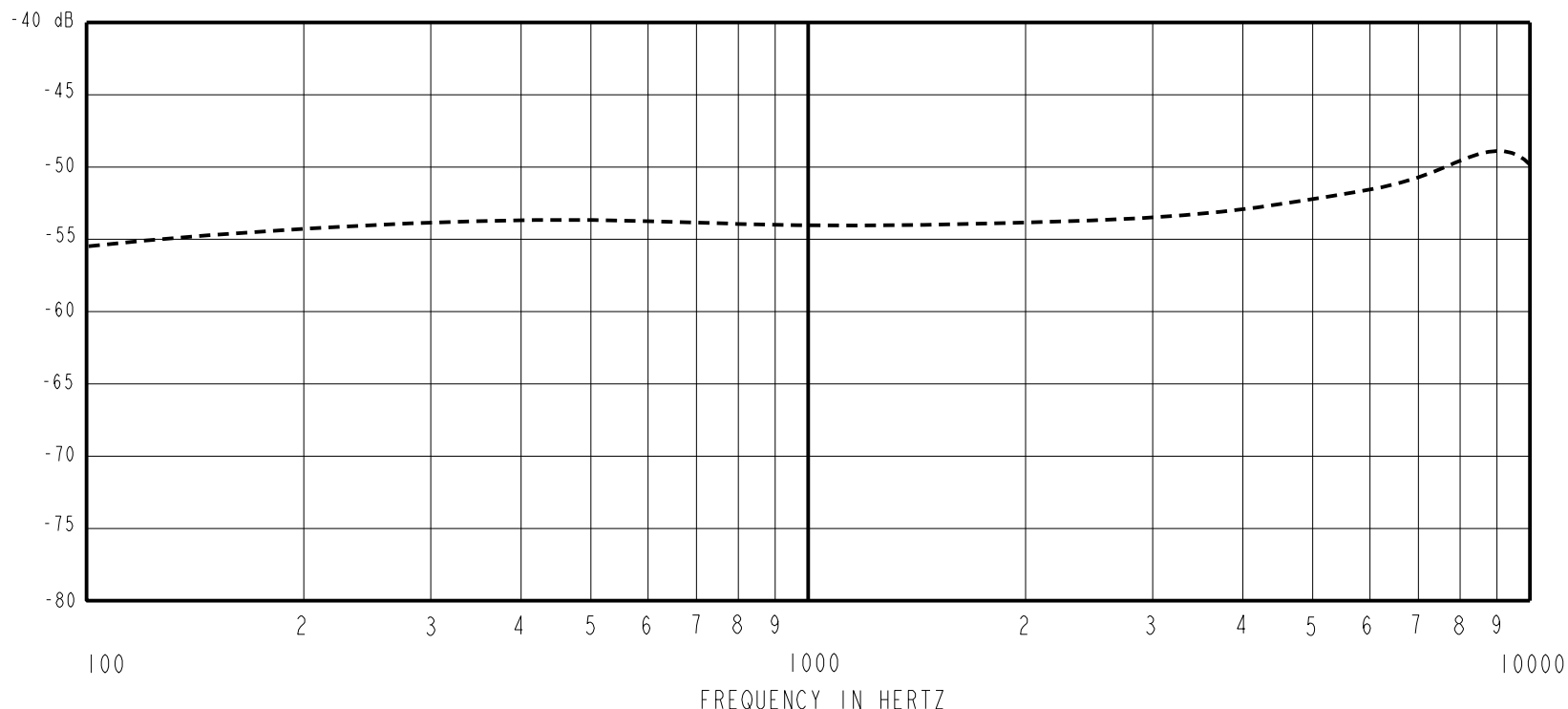
DIMENSIONS IN MILLIMETERS [INCHES]

Revision	C.O. #	Implementation Date	RELEASE LEVEL	REVISION
F	M1013614	4-9-10	Active	F
E	M10103424	2-11-10		
D	M10102976	8-4-09		

SCALE: 4:1		DR. BY: DATE
DO NOT SCALE DRAWING		MMM 6-15-06
TITLE: MICROPHONE		CK. BY: DATE
OUTLINE DRAWING		GJP 6-20-06
T0-30023-000		APP. BY: DATE
SHT 1.1		GJP 6-20-06

KNOWLES ELECTRONICS
ITASCA, ILLINOIS U.S.A.

SENSITIVITY IN dB RELATIVE TO 1.0 VOLT/0.1 Pa (N/M²)
FOR CONDITIONS SHOWN BELOW.

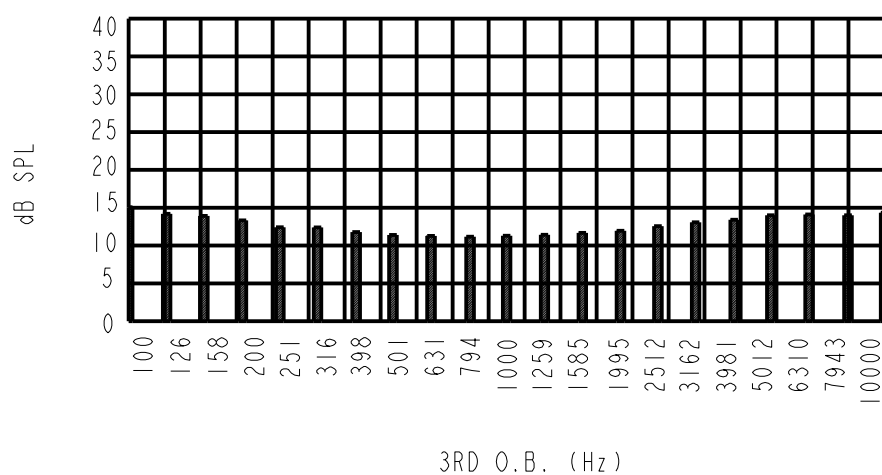


FREQUENCY	SENSITIVITY			DEVICE CONFORMITY	
	MIN.	NOM.	MAX.	RANGE OF DEVIATION FROM 1KHz	
70	---	-57.0	---	-5.0	-1.0
1000	-57.0	-54.0	-51.0	0.0	0.0
9500	---	-49.0	---	+2.0	+8.0

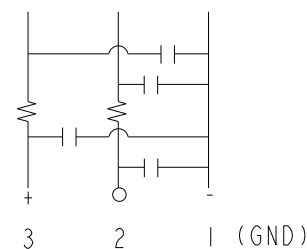
- NOTES:
1. CASE CONNECTED TO NEGATIVE TERMINAL.
 2. MICROPHONE TO BE FUNCTIONAL WITH 1.6 VDC SUPPLY.
 3. TYPICAL SENSITIVITY TO HUMIDITY AT 1000Hz IS 0.03 dB/%RH
 4. SENSITIVITY AND NOISE VALUES INDICATED ON THIS SPECIFICATION ARE VALID AT 50% HUMIDITY.
 5. CAPACITANCE MEASUREMENT MADE WITH BOONTON MODEL 7200 OR EQUIVALENT WITH APPLIED AC VOLTAGE OF 15 mVOLTS AT 1 MHz AND 0 VDC. INCLUDES CIRCUIT CAPACITANCE IN PARALLEL WITH CAPACITOR.

PORT LOCATION	DC SUPPLY	AMPLIFIER CURRENT DRAIN	SENSITIVITY CHANGE ON REDUCING SUPPLY TO 0.9VDC	"A" WEIGHTED NOISE (1 kHz EQUIV. SPL)		OUTPUT IMPEDANCE OHMS			CAPACITANCE ±50%	
				NOM.	MAX.	MIN.	NOM.	MAX.	1-2	1-3
12N	1.3V	75 µA MAX.	3 dB MAX.	25.0 dB	27.0 dB	1500	3750	6000	13pF	13pF

1/3RD OCTAVE BAND INPUT REFERRED NOISE - TYPICAL



CAPACITANCE PROBE POINTS



KNOWLES ELECTRONICS
ITASCA, ILLINOIS U.S.A.

Revision	C.O. #	Implementation Date	RELEASE LEVEL	REVISION
F	M1013614	4-9-10	Active	F
E	M10103424	2-11-10		
D	M10102976	8-4-09		

WHEN TEST LIMITS ARE USED TO ESTABLISH INCOMING INSPECTION ACCEPTANCE/REJECTION CRITERIA, CORRELATION OF TEST EQUIPMENT WITH KNOWLES IS ALSO REQUIRED FOR ELIMINATION OF EQUIPMENT AND TEST METHOD VARIATION		DR. BY	DATE
TITLE: MICROPHONE PERFORMANCE SPECIFICATION		MMM	6-15-06
		CK. BY	DATE
		GJP	6-20-06
		APP. BY	DATE
		GJP	6-20-06

TO-30023-000	
SHT 2.1	