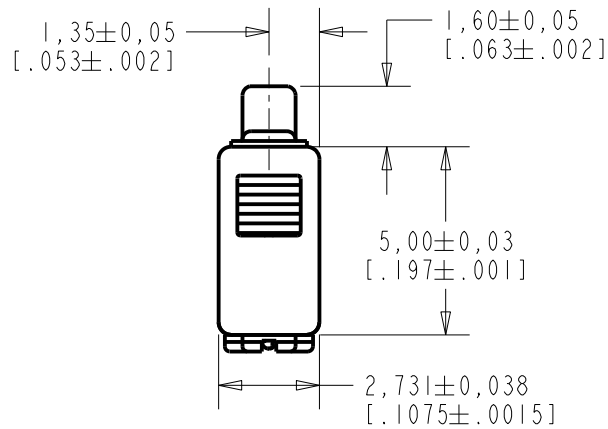


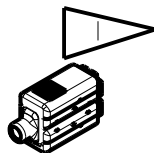
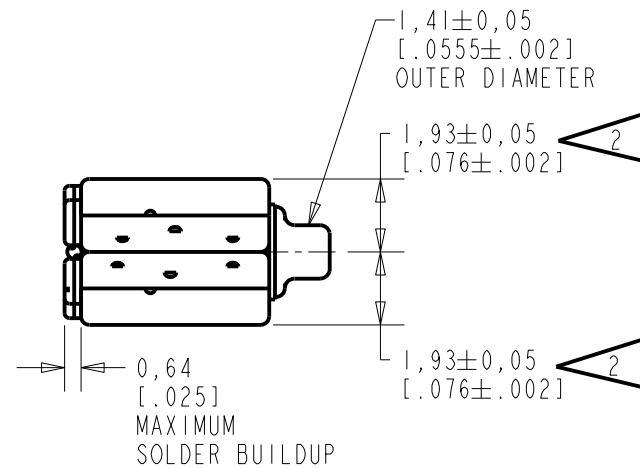
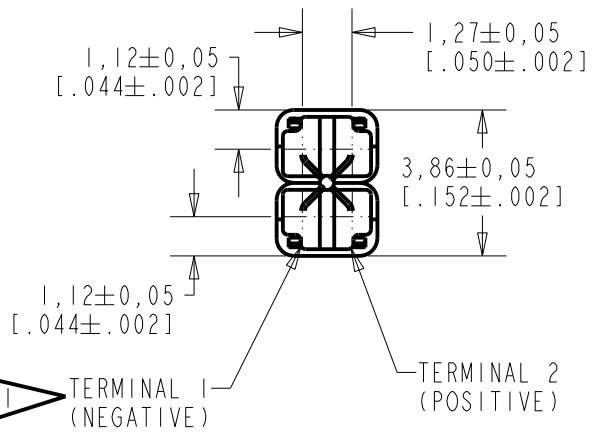
**SWFK-31736-000**  
SHT 1.1



NOTES:

- 1 A POSITIVE GOING VOLTAGE AT TERMINAL 2, RELATIVE TO TERMINAL 1, CAUSES A DECREASE IN PRESSURE AT THE SOUND OUTLET.
- 2 LOCATED FROM TWO SURFACES FOR CUSTOMER CONVENIENCE. ONLY APPLICABLE FROM ONE SURFACE, NOT TO BE USED TOGETHER.

**RED CONTROLLED**



1 TERMINAL 1 (NEGATIVE)  
2 TERMINAL 2 (POSITIVE)

SCALE 2:1  
NOMINAL WEIGHT 0.19 GRAMS  
DIMENSIONS IN MILLIMETERS [INCHES]

**KNOWLES ELECTRONICS**  
ITASCA, ILLINOIS U.S.A.

Revision	C.O. #	Implementation Date	RELEASE LEVEL	REVISION
A	CI0114785P	11-11-13	Active	A
SCALE: 5:1			DR. BY DATE	
DO NOT SCALE DRAWING			OQ 11-11-13	
TITLE: RECEIVER			CK. BY DATE	
OUTLINE DRAWING			GJP 11-13-13	
SWFK-31736-000			APP. BY DATE	
SHT 1.1			GJP 11-13-13	

A PAIR OF MAGNETIC BALANCED ARMATURE RECEIVERS WITH TAPERED REED INTENDED FOR USE AS THE HIGH FREQUENCY DRIVER IN A HI-FI SYSTEM.

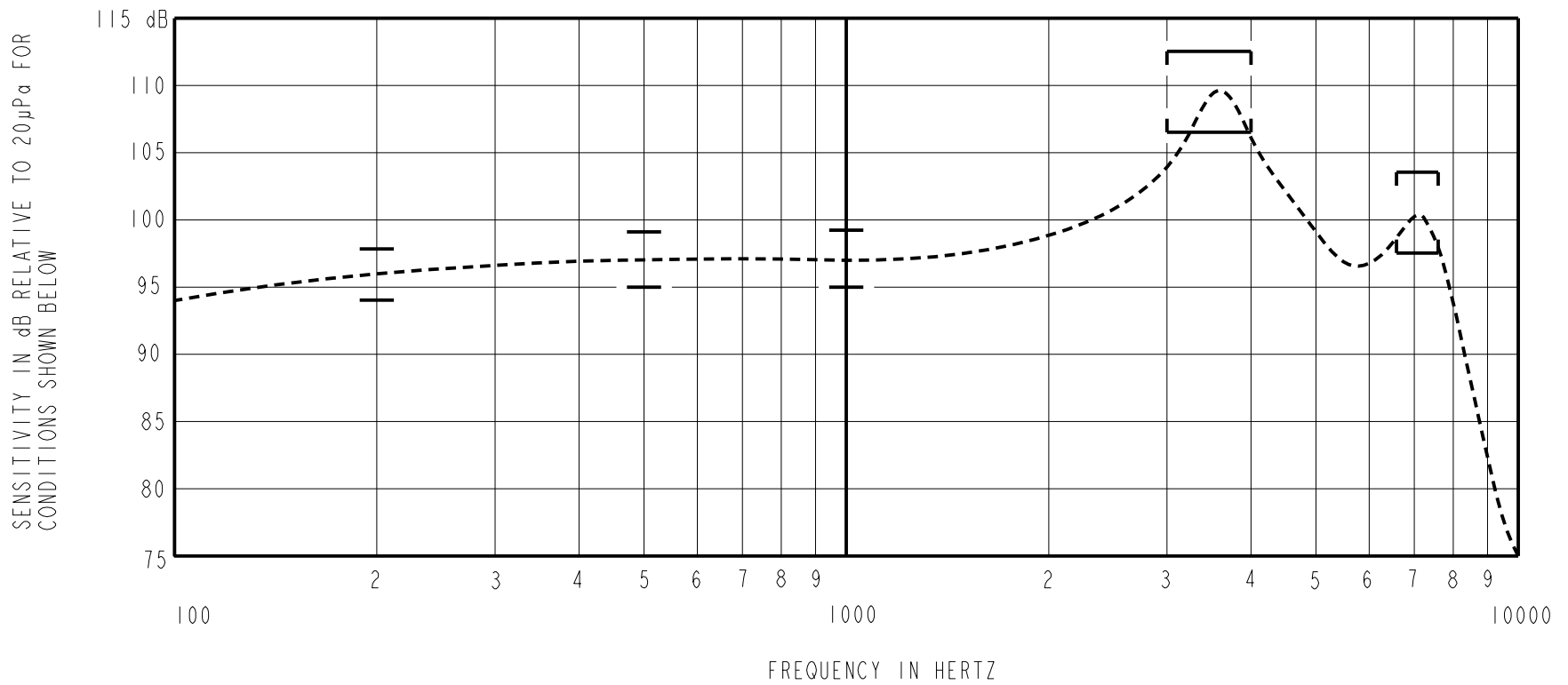
NO DAMPING

SWFK-31736-000

SHEET 2.1

NOTE: SPECIFICATIONS FOLLOWED BY AN ASTERISK (\*) ARE 100% TESTED.

CONSTANT VOLTAGE CONDITIONS



### ACOUSTICAL

SENSITIVITY\*  
 DEVICE WILL PRODUCE THE SPL LISTED BELOW UNDER TEST CONDITION IN TABLE 3.  
 NOMINAL SENSITIVITY AT 1kHz IS dB RELATIVE TO 20  $\mu$ P<sub>a</sub>. ALL OTHER VALUES  
 IN dB RELATIVE TO THE SENSITIVITY AT 1kHz.

FREQUENCY (Hz)	MINIMUM	NOMINAL	MAXIMUM
200	-3.0	-1.0	+1.0
500	-2.0	0.0	+2.0
1000	-2.0	97.0	+2.0
3000-4000 PEAK	+9.5	+12.5	+15.5
6600-7600 PEAK	+0.5	+3.5	+6.5

TABLE 1

TOTAL HARMONIC DISTORTION\*  
 DEVICE WILL NOT EXCEED TOTAL HARMONIC DISTORTION LEVELS LISTED BELOW.

FREQUENCY (Hz)	AC DRIVE (V rms)	DC BIAS (V)	LIMIT (%)
1166	.094	0	5
1750	.094	0	5
1750	.265	0	10

TABLE 2

### TEST CONDITIONS

NOMINAL SOURCE VOLTAGE	.094 V rms, 0 mA DC BIAS
SOURCE IMPEDANCE	<0.2 Ohm
TUBING	10mm [.394"] LONG, 1mm [.039"] I.D.
COUPLER CAVITY	2 CM <sup>3</sup> , SIMULATED ANSI S3.7 TYPE HA-3 (IEC 60318-5)

TABLE 3

### ELECTRICAL

DC RESISTANCE	6.3 Ohms $\pm$ 10%*
IMPEDANCE @ 500 Hz	6.6 Ohms $\pm$ 20%*
IMPEDANCE @ 1kHz	7.0 Ohms $\pm$ 20%*

TABLE 4

ISOLATION: CASE WILL BE ELECTRICALLY ISOLATED FROM THE COIL CIRCUIT.

### MECHANICAL

PORT LOCATION: 12S  
 SOLDER TYPE: SAC305  
 TEMPERATURE  
 OPERATING: SENSITIVITY WILL NOT VARY MORE  
 THAN +1 / -3 dB FROM -17°C TO 63°C.  
 STORAGE: -40°C TO 63°C.

Revision	C.O. #	Implementation Date	RELEASE LEVEL	REVISION
			Active	A
A	CI0114785P	11-11-13		
WHEN TEST LIMITS ARE USED TO ESTABLISH INCOMING INSPECTION ACCEPTANCE/REJECTION CRITERIA, CORRELATION OF TEST EQUIPMENT WITH KNOWLES IS ALSO REQUIRED FOR ELIMINATION OF EQUIPMENT AND TEST METHOD VARIATION			DR. BY	DATE
TITLE: RECEIVER PERFORMANCE SPECIFICATION			OO	11-11-13
			CK. BY	DATE
SWFK-31736-000 SHT 2.1			GJP	11-13-13
			APP. BY	DATE
			GJP	11-13-13

**KNOWLES ELECTRONICS**  
 ITASCA, ILLINOIS U.S.A.