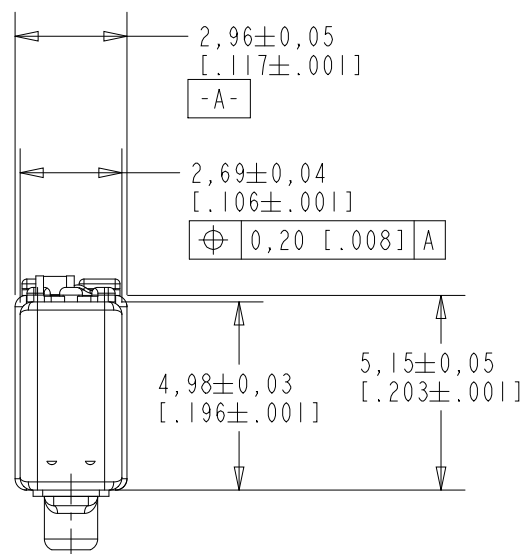


GM-34020-000

SHT 1.1



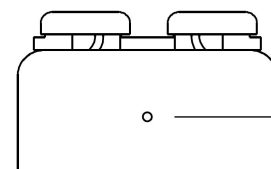
NOTE:



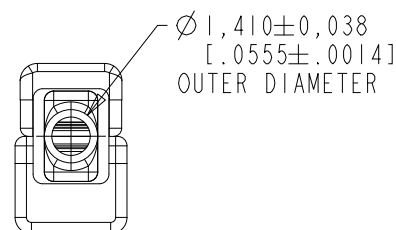
A POSITIVE GOING VOLTAGE AT TERMINAL 2, RELATIVE TO TERMINAL 1, CAUSES AN INCREASE IN PRESSURE AT THE SOUND OUTLET.



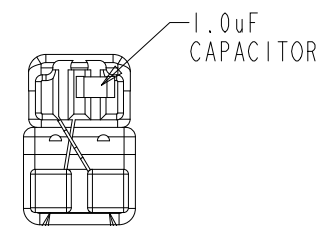
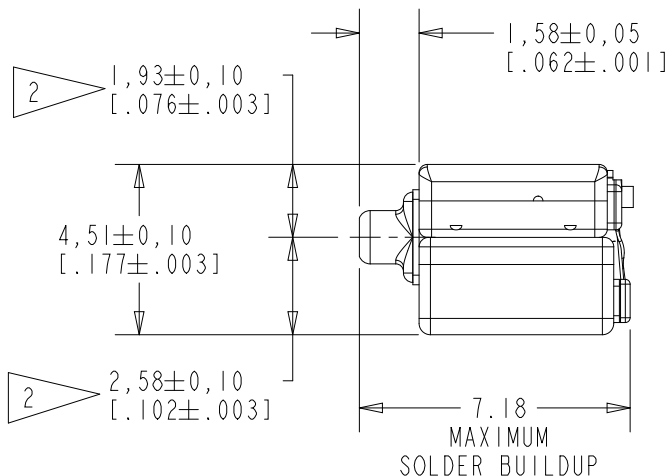
LOCATED FROM TWO SURFACES FOR CUSTOMER CONVENIENCE. ONLY APPLICABLE FROM ONE SURFACE, NOT TO BE USED TOGETHER.



Vent hole should not be covered



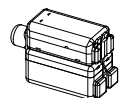
OUTER DIAMETER



1.0uF CAPACITOR

TERMINAL 1 (NEGATIVE)

TERMINAL 2 (POSITIVE)



SCALE 2:1

Pre-Release for Sampling

DIMENSIONS IN MILLIMETERS [INCHES]

KNOWLES CORPORATION

Revision	C.O. #	Implementation Date	RELEASE LEVEL	REVISION
			Design	1
SCALE: 5:1			DR. BY JDB	DATE 5-29-20
DO NOT SCALE DRAWING			CK. BY	DATE
TITLE: RECEIVER		GM-34020-000		APP. BY
OUTLINE DRAWING		SHT 1.1		DATE

KE111ASIZE.FRM

Rev: B

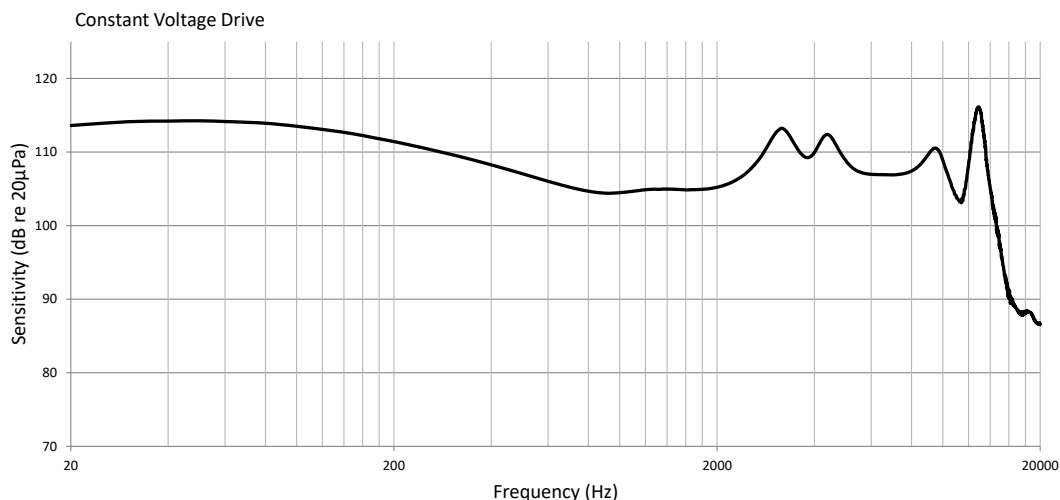
THIS IS AN UNDAMPED MAGNETIC BALANCED ARMATURE
RECEIVER INTENDED FOR USE IN EARPHONE APPLICATIONS.

NO DAMPING

GM-34020-000

Sht 2.1

RoHS Compliant



ACOUSTICAL

SENSITIVITY: DEVICE WILL PRODUCE THE SPL LISTED BELOW WITH THE TEST CONDITIONS DESCRIBED IN TABLE 3. NORMAL SENSITIVITY AT 1kHz RELATIVE TO 20 µPa. ALL OTHER VALUES IN dB RELATIVE TO SENSITIVITY AT 1kHz.

LIMIT TYPE	FREQUENCY (Hz)	MINIMUM	NOMINAL	MAXIMUM
REL	50	7.0	10.0	13.0
REL	100	6.0	9.0	12.0
REL	200	4.0	7.0	10.0
REL	500	0.0	3.0	6.0
Ref	1000	3.0	104.0	3.0
PKREL	2800 - 3500	6.0	9.0	12.0
VLREL	3600 - 4400	-2.0	1.0	4.0
PKREL	4200 - 5000	4.0	7.0	10.0

TABLE 1

TOTAL HARMONIC DISTORTION: DEVICE WILL NOT EXCEED TOTAL HARMONIC DISTORTION LEVELS LISTED BELOW:

FREQUENCY (Hz)	AC DRIVE (Vrms)	BIAS	LIMIT (%)
1/3*PEAK1	0.100	0	5
1/2*PEAK 1	0.100	0	5
1/3*PEAK1	0.282	0	10
1/2*PEAK 1	0.282	0	10

TABLE 2

Test Conditions

NOMINAL SOURCE VOLTAGE	0.100 Vrms
SOURCE IMPEDANCE	<1 Ohm
TUBING	DIRECT TO COUPLER USING T8688
COUPLER CAVITY	IEC 60318-4 (IEC 711)

TABLE 3

ELECTRICAL

DC RESISTANCE	12.5 Ohms ± 10%
IMPEDANCE @ 500 Hz	40.4 Ohms ± 15%
IMPEDANCE @ 1 kHz	85.0 Ohms ± 15%

ISOLATION: CASE WILL BE ELECTRICALLY ISOLATED FROM THE COIL CIRCUIT.

MECHANICAL

PORT LOCATION: 12S

SOLDER TYPE: ROHS COMPLIANT, SAC 305

TEMPERATURE

OPERATING SENSITIVITY WILL NOT VARY MORE THAN +1/-3 dB FROM 0°C to +63°C.

STORAGE: -40°C TO +63°C

Knowles reserves the right to make changes to improve reliability and performance of the product.

Pre-Release for Sampling

Knowles Corporation

Revision	C.O. #	Implementation Date	Release level	Revision
			DESIGN	1
When test limits are used to establish incoming inspection acceptance/rejection criteria, correlation of test equipment with Knowles is also required for elimination of equipment and test method variation.				Dr by
				Date
				Ck by
				Date
				App by
				Date

Receiver
Performance Specification

GM-34020-000

Sht 2.1

This document contains confidential, proprietary, trade secret information of Knowles Electronics, LLC or its affiliated entities.
Any unauthorized use or dissemination is strictly prohibited.